



BFT-20x2

2x20-Liter Portable Medical Refrigerator Unit with Cart

The BFT-20x2 portable medical BioFridge with cart was designed for use within hospitals, laboratories and medical facilities. Popularly used as vaccine refrigerators and for transporting blood, it features an internal fan, sturdy handles, lockable latch and a programmable digital thermostat.

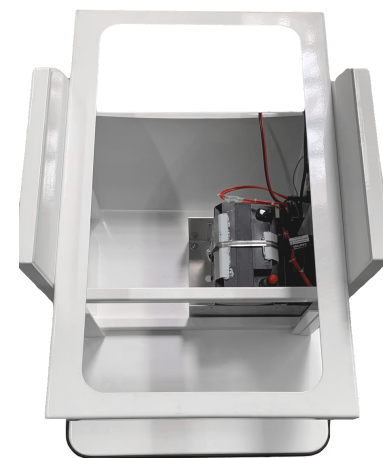
GENERAL SPECIFICATIONS

VOLUME	2x 20 Liters
Temperature Range	Refrigerator 2° to 8°C Freezer 0° to -20°C
INSIDE DIMENSIONS	2x 11"L x 8"W x 10"H
INTERNAL BASKET	up to (12) twelve 500 ml bags of RBCs or Plasma
OUTSIDE DIMENSIONS	34"Lx27"Wx44"H
WEIGHT	137 Lbs
Electrical Rating (AC)	100-240 VAC, 50/60Hz 0.4 Amps to 0.16 Amps
Power Consumption	60 Watts max
Compressor Capacity	18 - 150Liters Displacement 2.0cm ³
Fan	Internal fan to ensure even temperature
Datalogger (optional)	Datalogger with Temperature Probe



BATTERY (located inside the cart)

Electrical Rating (DC)	12-24 VDC ~4 Amps to 1.6Amps
Battery Life	40Ahr Battery = 26 to 32 hours
Time to Recharge	5 hours (from 100% depleted to full charge)
Battery Status	On the Cart & on the front of Refrigeration unit



BASKET (Optional)

